

Dubbo Health Services

Western NSW Local Health District



Dr Jeniffer Fiore-Chapman

Director Prevocational Education and Training

Jeniffer.FioreChapman@health.nsw.gov.au

02 6809 7408

Judy Keller

Medical Administration Manager

Judy.Keller@health.nsw.gov.au

02 6809 8502

Linda Cutler

Director, Western NSW Regional
Training Hub

linda.cutler@sydney.edu.au

Dubbo Health Service is part of the Western NSW Local Health District and we acknowledge the traditional custodians of the lands across our region. We acknowledge that we live and work on Aboriginal lands. We pay our respects to Elders past and present and to all Aboriginal people.



Acknowledgement of
Country



The Western NSW Local Health District covers around 250,000 square kilometres

With a population of 270,775 it encompasses cities, major regional centres and remote communities



What our area offers!!

- enjoy a 5 minute commute to work in our growing regional 'evocity'.
- excellent coffee, an exceptional farmers market, and beautiful riverside trails to explore (12.5 km cycle/walking track)
- In-depth education program for JMOs with enthusiastic senior mentors
- A strong working relationship with the University of Sydney School of Rural Health and the Royal Flying Doctor Service ensure you will feel educationally supported throughout your internship into residency
- We are proud and well know for our strong sense of collegiality and teamwork.
- Outside of work, our rosters allow JMOs ample time to enjoy the cultural highlights and natural beauty of Dubbo.
- Extensive sporting facilities



PGY1

- General Medicine
- Gastroenterology
- Respiratory
- Neurology
- Oncology
- General Surgery
- ENT
- Urology
- Orthopaedics
- Emergency Medicine
- Rheumatology
- Renal Medicine
- Cardiology
- Psychiatry
- Relief

PGY2s also undertake terms in...

- Anaesthetics
- Paediatrics
- ICU
- O&G

Accredited Advanced Training posts in Nephrology, Respiratory, Medical oncology, Psychiatry, Anesthetics, ICU, Emergency (RFDS), rheumatology plus other under development

Rural Generalist advanced training in ED, O&G and Anaesthetics

Looking for a metro term - all terms at RPA Hospital are also available to Dubbo JMO's!

Medical Services

- Comprehensive range of general and specialty services
- Surgical Services include: Orthopaedics, General, Obs & Gynae, Vascular, Colorectal, ENT, Urology, Dental and Ophthalmology ensuring an excellent exposure to a range of surgical cases
- With over 1300 births per year (1369 om 2022) in our brand-new Maternity Suite, you will gain broad experience either meeting your goals and expectations for GP Training or as a start on your specialist training pathway.
- Medical and Critical Care services provides extensive General and Intensive Care Medicine experiences as well as nephrology, oncology, cardiology, neurology, respiratory, rheumatology, and gastroenterology



Modern Spacious Facilities



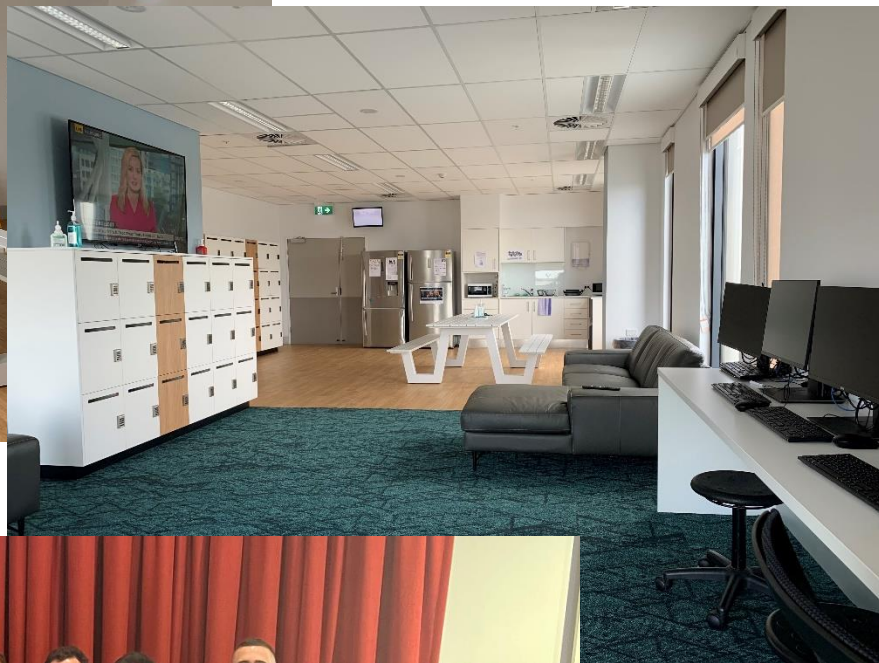
Free and Secure Undercover staff car parking



The trusty RHINO- our uniform logo



Our New JMO Lounge



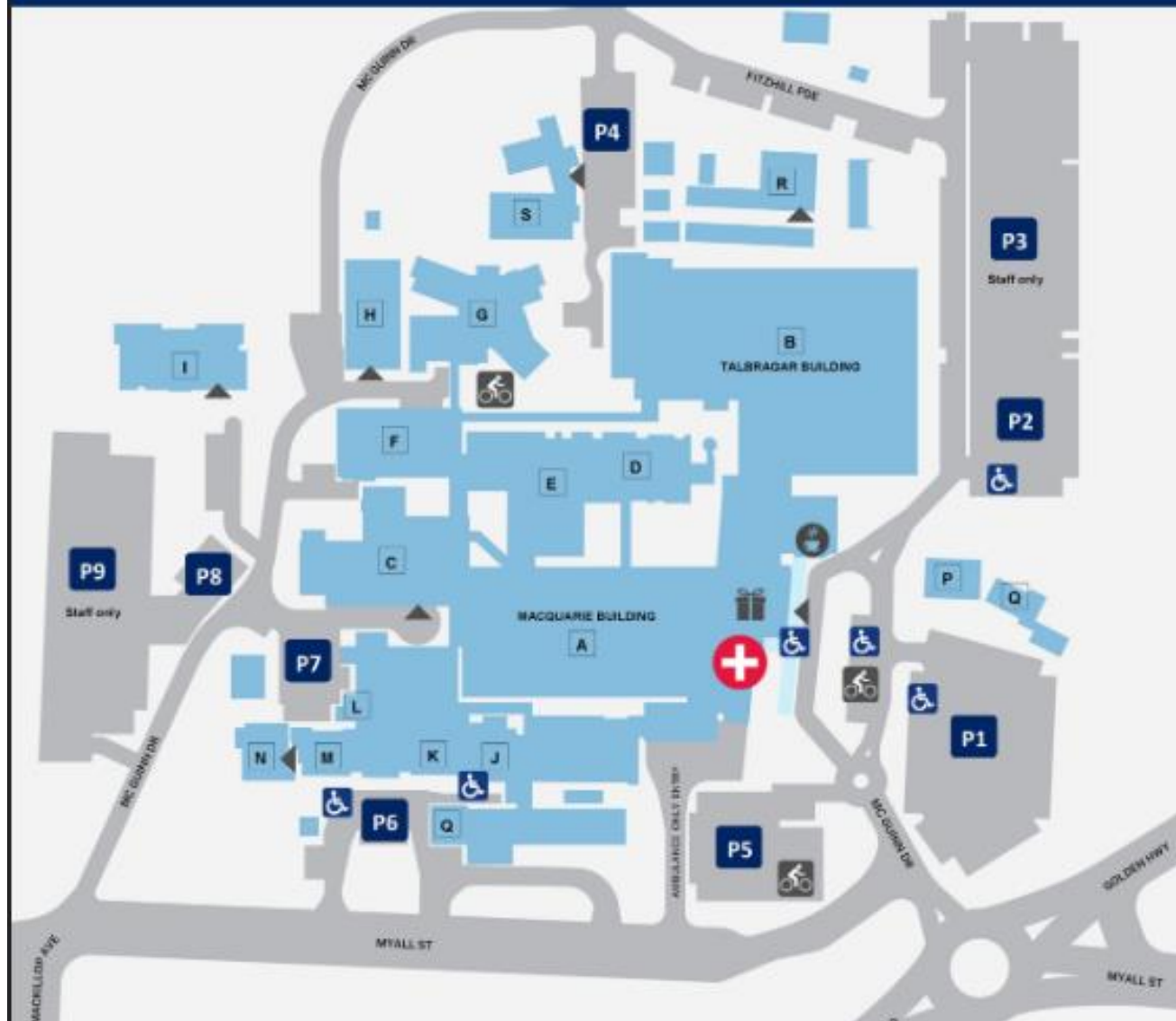
Interns and sim at the RFDS Base



Annual DBH Hospital Ball:
JMOs and our DPET



DUBBO HOSPITAL CAMPUS MAP



SERVICES:

- A. Macquarie Building
 - Ground Level:
 - Emergency Department
 - Medical Imaging
 - Level 1: Ambulatory Care Centre, Pathology Collection & Quiet Room
 - Level 2: Critical Care Floor
 - CU
 - CCU/stroke Unit
- B. Talbragar Building
 - Ground Level:
 - Day Surgery
 - Extended Day Surgery Unit
 - Level 1:
 - Dialysis Unit
 - Maternity
 - Level 2:
 - Surgical Unit
- C. Western Cancer Centre Dubbo
 - Ground Level: Radiation Therapy & PET
 - Level 1: Treatment And Clinics
- D. Paediatric Unit
- E. Medical Ward
- F. Ian Locke Building
 - Medical Records
 - Meeting Rooms & Medical Admin
- G. Mental Health Inpatient Unit
- H. Stores / Stores
- I. Barraminya Mental Health Sub Acute
- J. Pharmacy
- K. Cardiac Rehab
- L. Chapel
- M. Physio
- N. Paediatric Outpatient Clinic
- O. Pathology
- P. Breast Screen
- Q. Tooraweenah Accommodation
- R. Maintenance / Bio Medical
- S. Diabetes / Oncology

- | | | | |
|---|---------------------------|---|-----------------------|
|  | Emergency |  | Cafe |
|  | Accessible parking/ entry |  | Gift shop |
|  | Bike rack |  | Public building entry |

- 6 ultra modern integrated Digital Operating Theatres
- New Surgical Inpatient Unit
- New maternity unit, birthing unit and special care nursery
- The only Respiratory Lung Function Unit in Western NSW
- Public EEG and Nerve Conduction clinics (only ones in Western NSW)
- A new renal dialysis unit required for the busiest service in NSW plus outreach telehealth services

- **6 ultra modern integrated Digital Operating Theatres**
- **New Surgical Inpatient Unit**
- **New maternity unit, birthing unit with water births and special care nursery**
- **The only Respiratory Lung Function Unit in Western NSW**
- **Public EEG and Nerve Conduction clinics (only ones in Western NSW)**
- **A new renal dialysis unit required for the busiest service in NSW plus outreach telehealth services**



- Emergency Department , Trauma Unit and Emergency Short Stay Unit
- Medical Imaging Department – 3T MRI, CT 320 slice, Ultra Sound units, multiple mobile units, 2 DR X-ray rooms within Department , + 1 in Outpatients Department
- Ambulatory Care – Medical Day Treatments and Specialist Outpatients
- New 12 Bed Intensive Care Unit
- New 20 Bed Coronary Care / Stroke Unit

Redevelopment!

Western Cancer Centre

- Expanded Medical Oncology Treatment space – 16 chairs up from 8
- State of the art Radiation Oncology Service
- New PET CT service – first Nuclear Medicine Service in the Western NSW LHD
- Cardiac Catheter Laboratory
- Purpose built JMO Lounge
- Redeveloped radiology department with 320 slice CT scanner, 4 US units & Multiple mobile units

**Hospital Tours are available!
Come and meet the team and experience all Dubbo has to offer you for
your JMO Training!**

LINKairways



QANTASLINK



reX.
Regional Express



AIRLINK



Truly the travel centre for Western NSW

Fly Direct to Sydney, Melbourne, Brisbane, Broken Hill, Walgett, Bourke and Lightning ridge with over 14 flights on weekdays and up to eight per day on a weekend. Trains run from Dubbo—Sydney return daily and it is a 5 hour drive through wine country to reach the Sydney CBD!

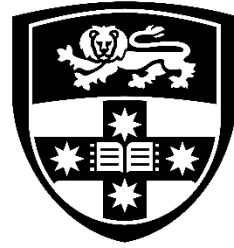


Emergency medicine is an extremely popular term at Dubbo and is guaranteed to provide hands on and procedural exposure in a fast paced clinical environment. Many of our past trainees have gone on to obtain competitive metropolitan training positions in Emergency, Medicine and Surgery training programs.

Dubbo Health Service maintains a strong partnership with HETI and offers SRMO's exposure to Anaesthetics, Emergency and Obstetrics & Gynaecology career pathways. We are passionate about seeing our trainees meet their career goals, whether that means further training with the College for Emergency Medicine, entry into a Specialist Training Program, or pursuing rural and remote practice as a Rural Generalist.

Undertaking your Internship and Resident training at Dubbo Health Service will provide you with unmatched hands-on experience in clinical medicine in a supportive team environment - all in a beautiful and evolving regional city!





THE UNIVERSITY OF
SYDNEY |
SCHOOL OF RURAL HEALTH

Western NSW
Regional Training Hub

- Mentoring program
- Scholarships
- CPD closer to home
- Teaching on the Run



CV & Job
Application Support



Regional Medical
Training



Destination
Medicine



The Rural JMO
Almanac



Career Coaching
& Mentoring

So...what are you waiting for?! Come for a tour of the hospital before you apply, meet the JMO's and see what a great place Dubbo is!



<https://www.tpmd.com.au/only-in-dubbo-10-things-that-make-dubbo-unique/>



The River



Cultural Centre
and Japanese
Gardens



RFDS Base



Zoo experiences



Markets – Farmers
and Rotunda

